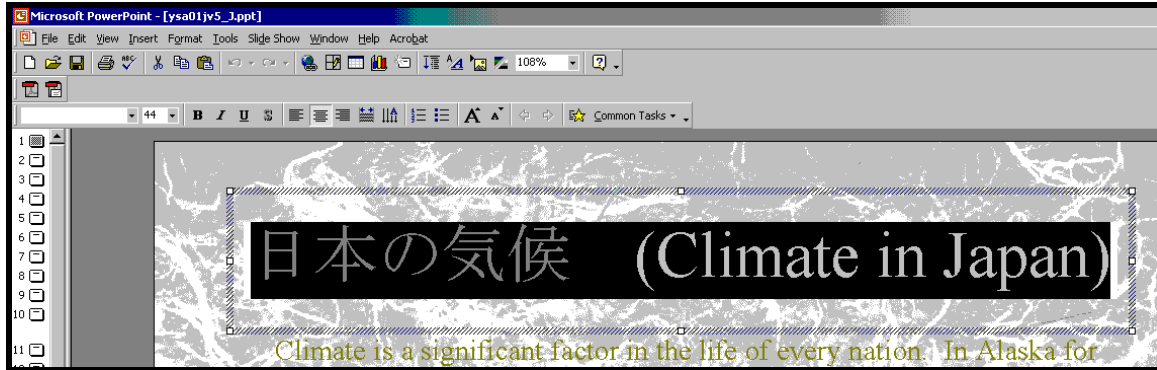


How to copy Japanese from PowerPoint, or other Microsoft Office 2000 applications, to Macromedia Dreamweaver using a PC

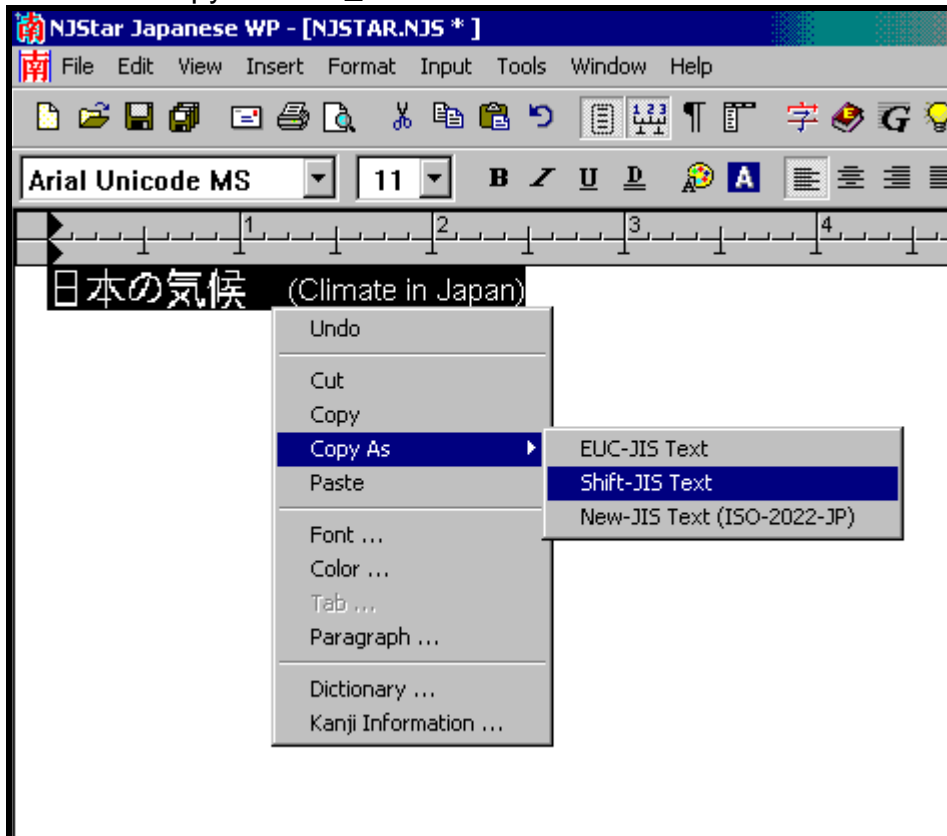
1. In PowerPoint

- a. Copy Japanese text in PowerPoint (Ctrl+C)



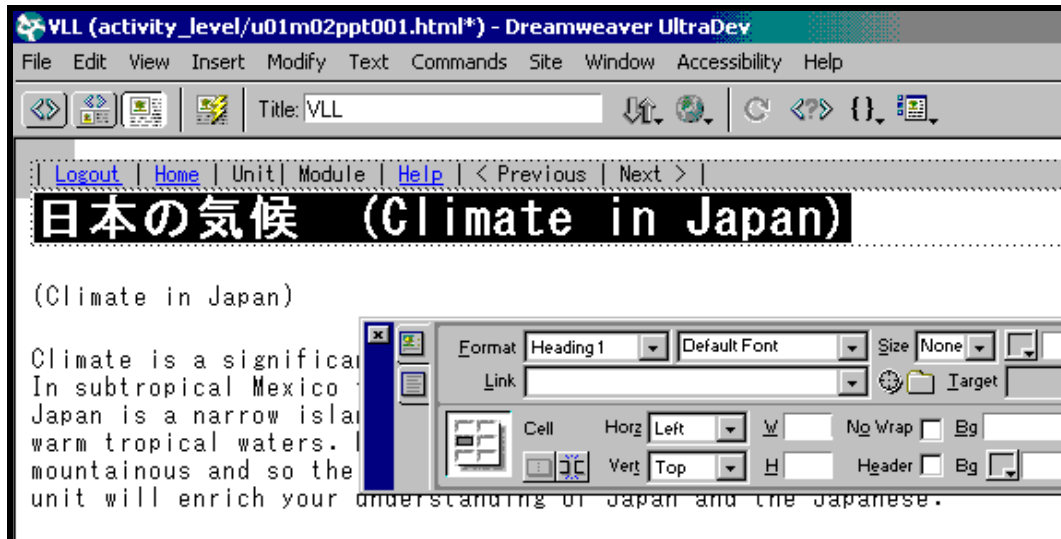
2. In NJStar

- a. Paste text (Ctrl+V)
- b. Select text (Ctrl+ A)
- c. Copy As Shift_JIS text



3. In Dreamweaver

a. Paste text (Ctrl+V)



*** End ***